

Pro-Kits Ltd Product & Services List

Mounting Kits

Locking Devices

Extension Stems

Pedestals

Lockouts

Spool Kits

Linkages

Rotary to Linear Conversions

Worm Gears

Handwheels

Bevel Gears

Solenoids

Spring Return Levers

Switchboxes

Reducing Inserts

Epoxy Painting

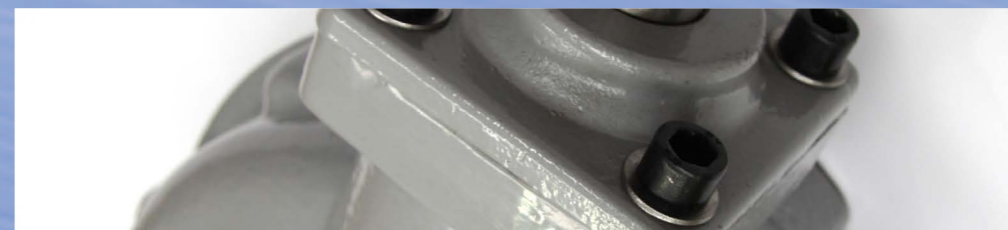
Shotblasting

Galvanising

Powder Coating



Pro-Gear



Multi Turn Gearboxes



Contact us at

Pro-Kits Ltd

Tel: +44 (0)1773 860629 • Fax: +44 (0)1773 860672



The UK's largest independent mounting kit manufacturer, we supply everything for the valve industry except valves and actuators

The Better Alternative

Introduction

Pro-Gear Ltd is a subsidiary company of Pro-Kits Ltd, specialising in the supply of Multi-turn Bevel Gears and Quarter Turn Worm Gears to the valve industry, with over 20 years of knowledge in design, manufacture and supply.

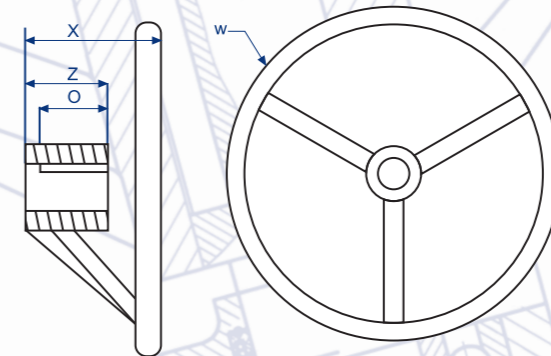
The Pro-Gear range of Bevel gears is suitable for all multi-turn applications such as gate, globe and parallel side valves, these are used in many industries like Petro-chemical, oil, gas and water works.

Dimensions

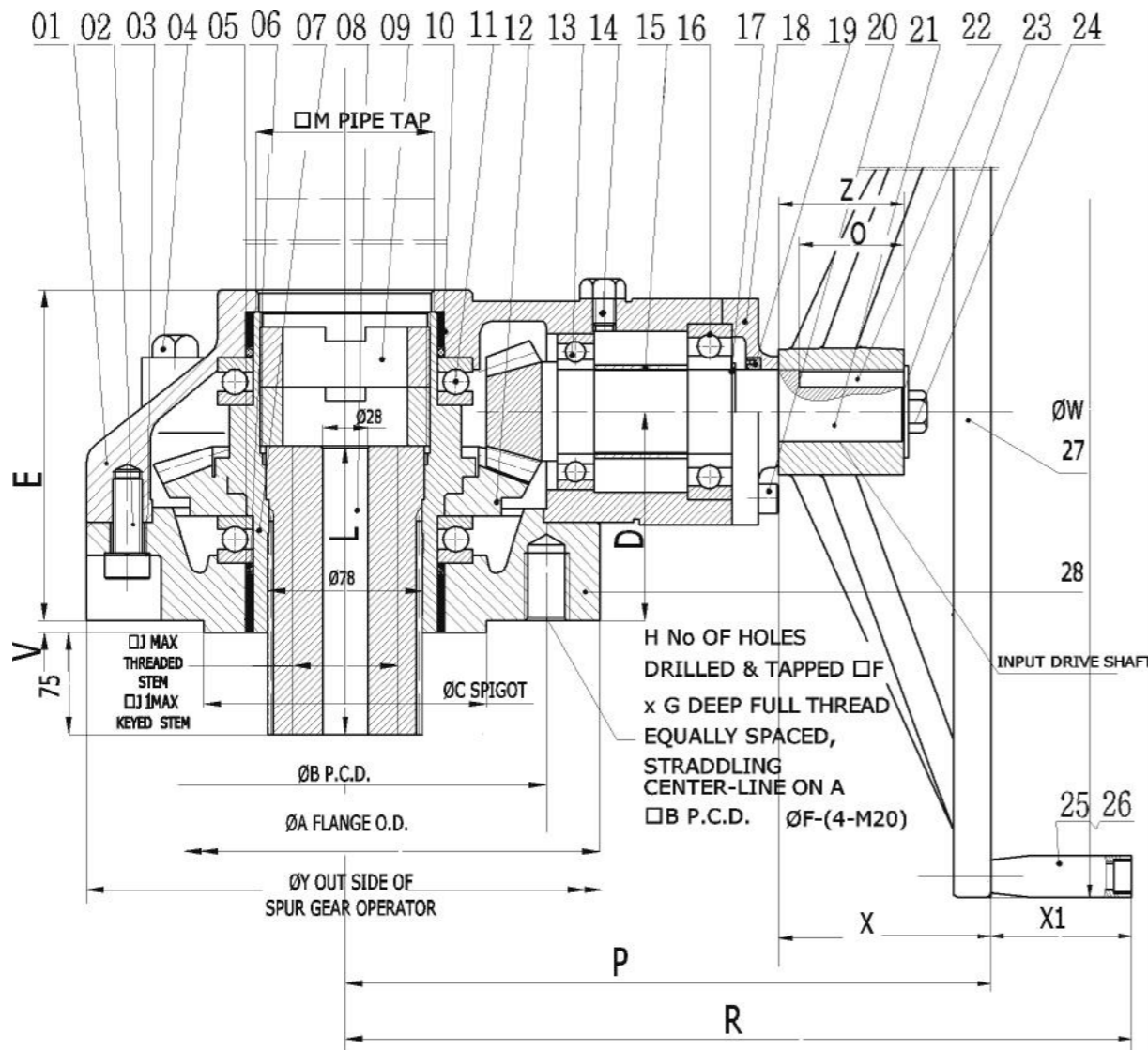
MODEL	A	B	C	D	E	F	G	H	J	J1	L	M	O	P	V	Y
PR5	178	140	100	76	118	M16	26	4	42	42	105	M63.5x1.5	52	220	4	214
PR10	210	165	130	86	132	M20	30	4	55	55	120	G 2.1/2"	52	250	5	265
PR20	289	165	130	96	158	M20	30	8	65	62	135	G 3"	52	310	5	340

Handwheels

All our gearboxes come with cast iron handwheels and have been sized in relation to the output torque (see table right).



MODEL	O	W	X	Z
PR5	52	460	83	60
PR10	52	460	83	60
PR20	52	610	100	60

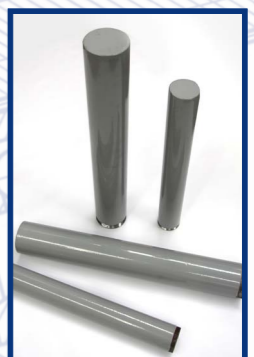


MODEL	RATIO	TORQUE	WEIGHT
PR5	4 : 1	500Nm	24 kg
PR10	4:1	1000Nm	34 kg
PR20	4:1	2000Nm	62 kg

Availability and prices on application.

Parts Material List

ITEM	PART NAME	MATERIAL
1	HOUSING	ASTM A216 GR. WCB
2	SCREWS	CHROMIUM STEEL
3	WASHER	AISI 1045
4	PLUG	CARBON STEEL
5	LOWER 'O' RING SEAL	NITRILE
6	BEVEL WHEEL	AISI 1045
7	DRIVE SLEEVE	AISI 1045
8	STEM DRIVE UNIT	ASTM A439 D2
9	LOCKING NUTS	AISI 1045
10	BEARING	STEEL + PTFE/PB
11	UPPER THRUST BEARING	CHROMIUM STEEL
12	BEVEL WHEEL	AISI 1045
13	INNER BEARING	CHROMIUM STEEL
14	PLUG	CARBON STEEL
15	SPACER RING	CARBON STEEL
16	INNER BEARING	CHROMIUM STEEL
17	CIRCLIP	CARBON STEEL
18	END CAP	ASTM A216 GR. WCB
19	RETAINER (OIL SEAL)	RUBBER
20	END CAP SET SCREWS	CHROMIUM STEEL
21	BEVEL PINION / DRIVE SHAFT	AISI 5140
22	DRIVE KEY	CARBON STEEL
23	HANDWHEEL RETAINING SCREW	CARBON STEEL
24	HANDWHEEL RETAINING SCREW	CARBON STEEL
25	HANDWHEEL SPINNER	ABS
26	HANDWHEEL RETAINING SCREW	CARBON STEEL
27	HANDWHEEL	ASTM . 60-40-18
28	BASE	ASTM A216 GR. WCB



Also available - units up to 8000Nm and spur gears up to 32,000Nm output